

尺寸: 93mm*79mm

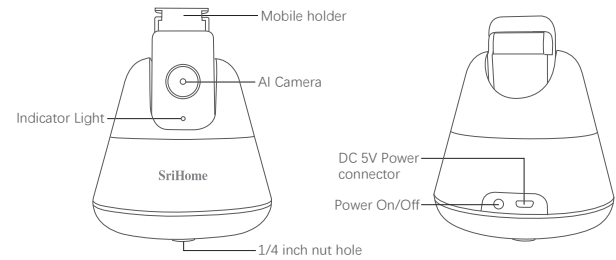
SriHome

Smart Tracking Mobile Holder User Manual



Model: SH006

Product introduction:



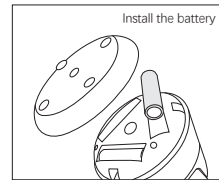
How To Use:

Put it on the desktop or use a tripod, suitable for live video, video shooting, video chat, video conference and other scenes.

-1-

Power Supply:

1. Supports 3-1.5V AA batteries for power supply, which can last for about 15 hours in standby mode.
2. External Micro USB input, support power bank or 5V DC power input.



Installation:

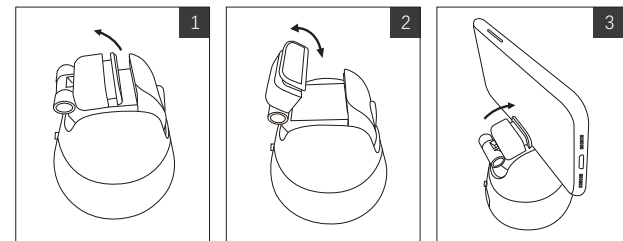
1. Install 3-AA batteries or connect a 5V power input, turn on the power button, the indicator light turns on.
2. Fix your phone with the clip, adjust the angle of the tilt to a suitable position.
3. Open your live streaming software, keep the distance within 0.5 to 3 meters.

Note:

1. Please do not put the device in a high temperature or humid environment.
2. SH006 gimbal will only target automatically and track one human face (body) if there are two or more human face.
3. Please do not rotate the gimbal manually.

-2-

Install phone:



Open the Bracket

Insert your Phone

Tighten your Phone

Shenzhen Sricctv Technology Co.,Ltd.

Add: The 4th Floor of building 46,5th Industrial Park of Huaide Cuiang,
Fuyong Street,Bao'an,Shenzhen,China.
E-Mail: Support@sricam.com
Website: www.sricam.com



-3-