

# CMS manual

## 1. What you can do with CMS

The CMS is the free software used on Microsoft WindowsXP , 7, 8, or 10 PC. CMS lets you:

- Access the cameras via LAN or WAN (locally via a Local Area Network or remotely via a Wide Area Network).
- Watch live video streams from more than one camera in the same time.
- Record and save live videos on your PC.
- Watch or transfer video files from Sricam's built-in micro SD card to your PC
- Convert the. AV file to. MP4 format.

Note: To update the camera's configuration (e.g., turning on and off the alarm or updating the camera's password) use the Sricam App on your smart phone.

## 2. Requirements for using CMS.

Make sure the following requirements are met:

- The PC has the Internet access.
- Windows xp/7/8/10 is running on this PC.
- Your camera has successfully set up and is connecting to the Internet.
- You have your camera ID and camera password

## 3. Download and Install the CMS

Download CMS from: [www.sricam.com/download](http://www.sricam.com/download):

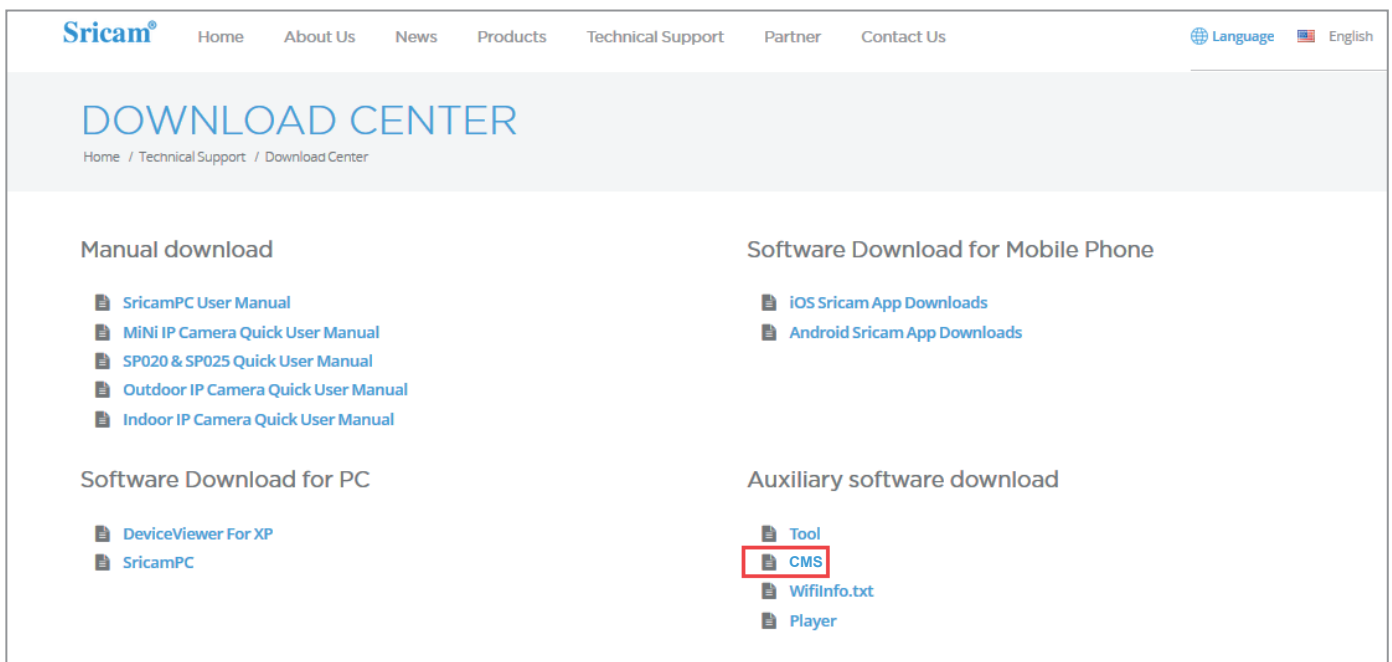


Figure 1 Login Window

Once installed, the following icon will be displayed on the PC's desktop:



#### 4.Register an user account for CMS:

Step4- 1: Open the link: <http://videoipcamera.cn/view/reg.html>

Step4- 2: Create a new password (twice) and click on "Next".

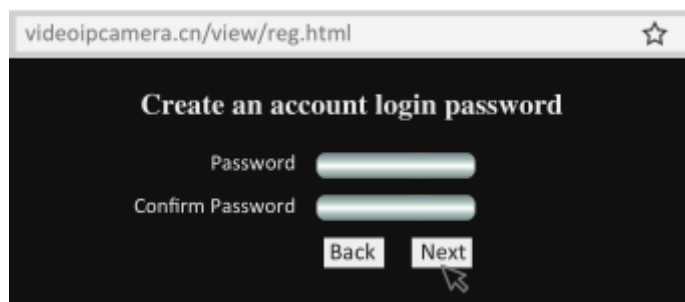


Figure 2 Create New Password

Step 4-3: Enter your email ID and click "Next".

NOTE: Both CMS and Sricam Smart Phone App needs a separate App account, therefore, if the email ID is used for registered on your Smart Phone App before, then cannot be used.

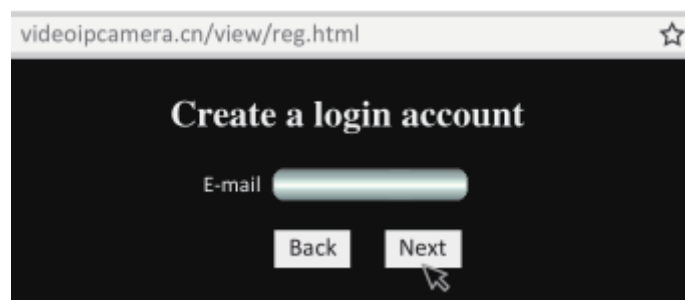


Figure 3 Create New Password

Step 4-4: Your new account ID will be displayed in the popup window. It will begin with zero. This ID is the CMS User account.

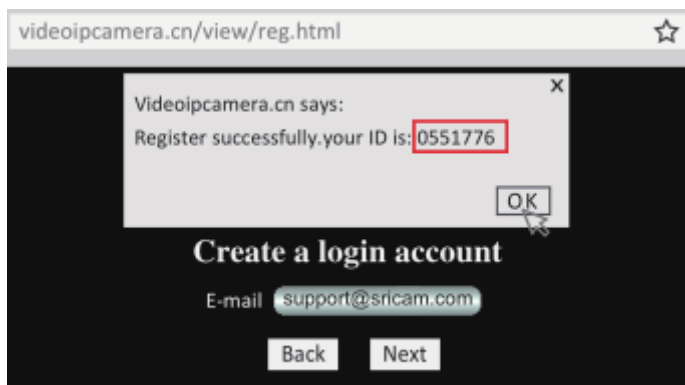


Figure 3 Create New Password

Note: the user ID is equal the email ID, so you can enter your email ID or account ID.

## 5.Add camera on CMS

Step 5-1:Enter your User and password, then click “OK”.

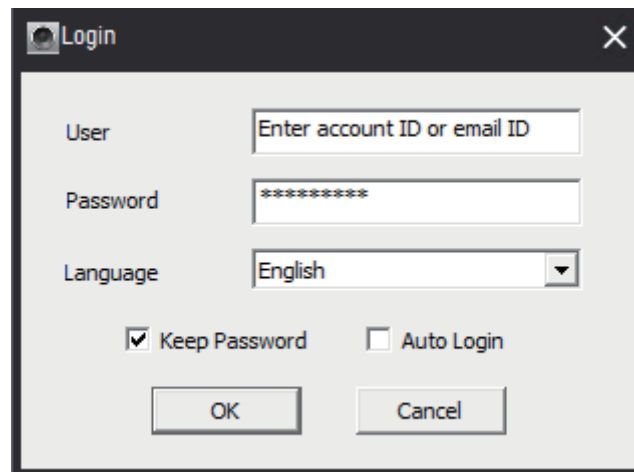


Figure 5 Login Window

Step 5-2 :Click“ignore”.

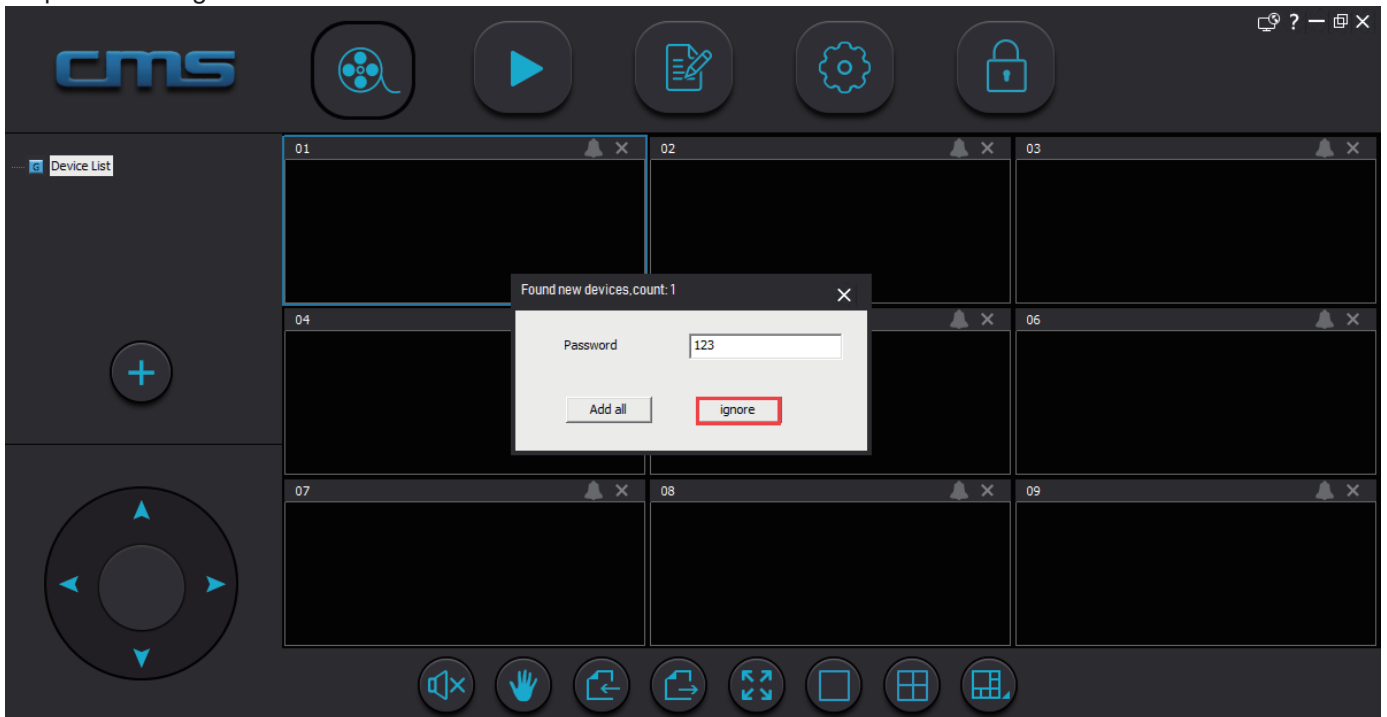


Figure 6 Login Window

Step 5-3: Click the add device icon “+” , then click “manual add device” icon as figure 7.

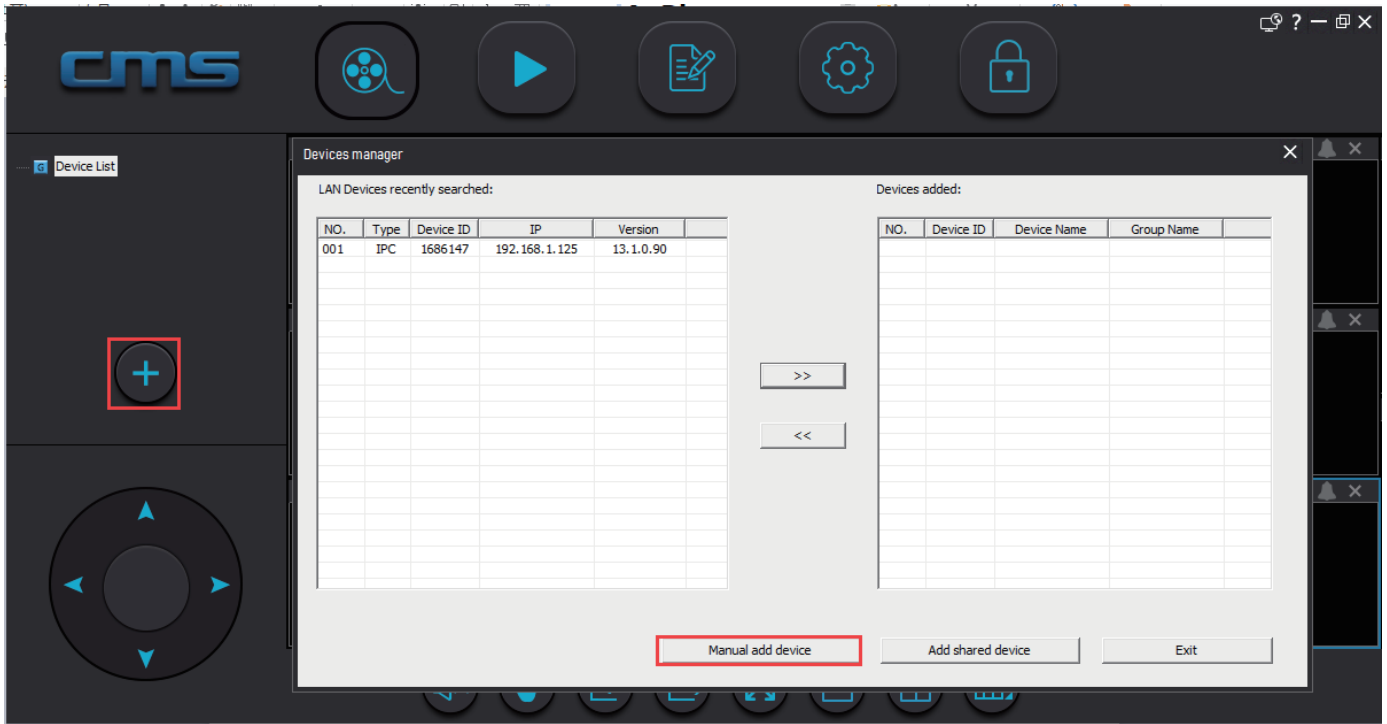


Figure 7 add device Window

Step 5-4: Filling camera information as figure 8, then click "OK"

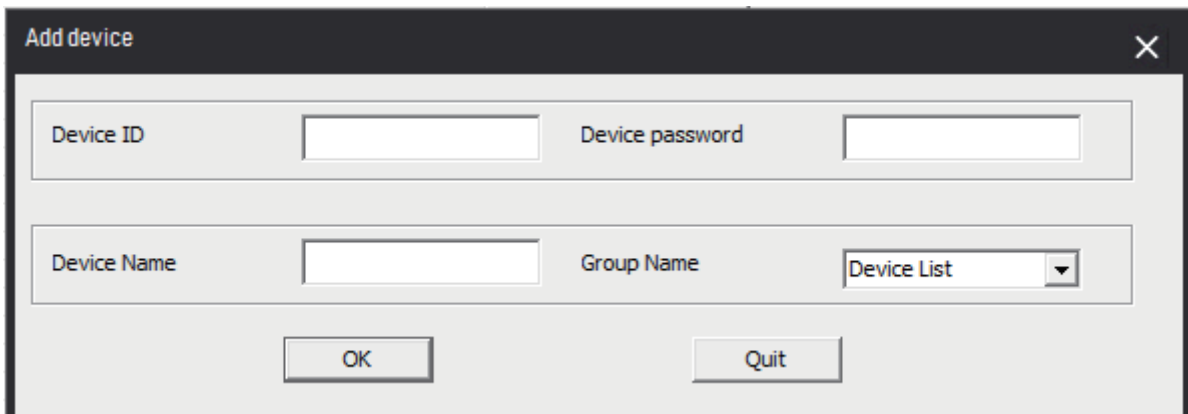
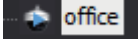


Figure 8 add device Window

Device ID: the camera ID is on the label which is attached to the camera.

Device password: the password of your camera.

Device name: give your camera a name e.g Home, office, shop.....

Step 5-5: Double-click the camera  icon to watch the live video.

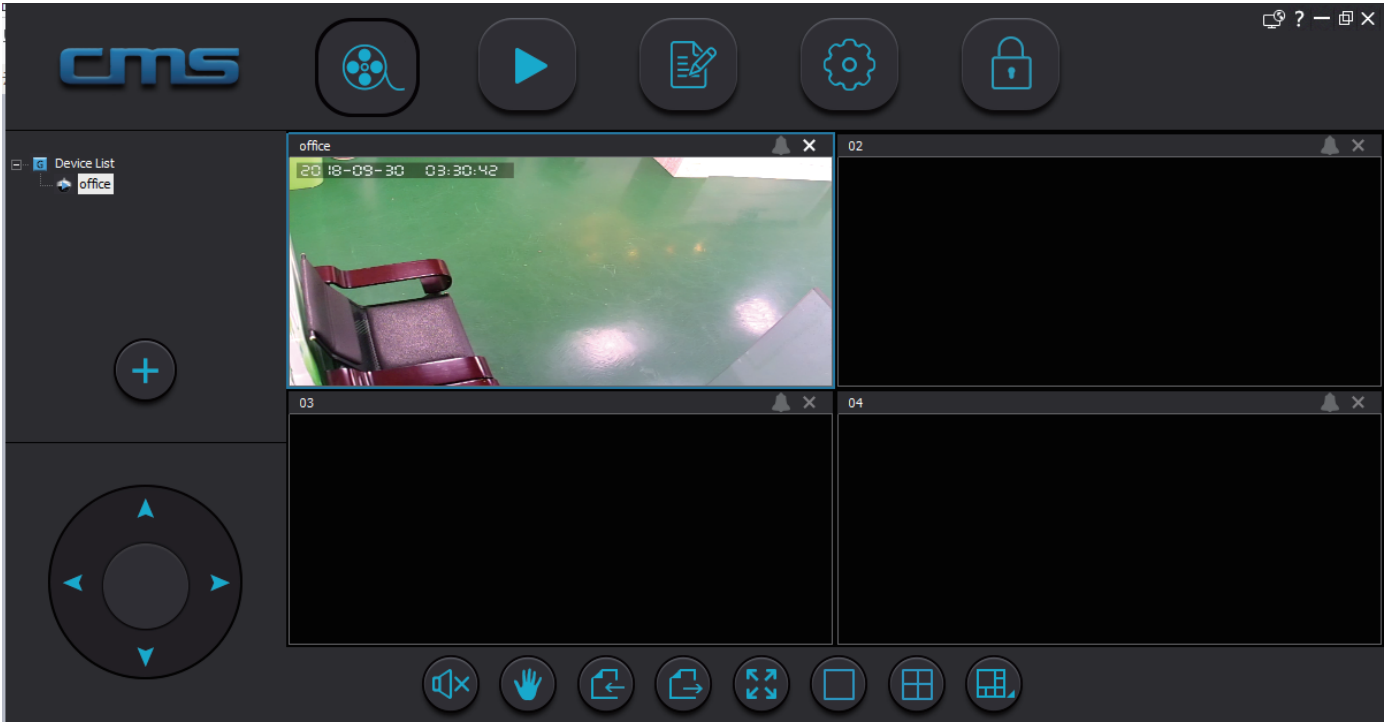


Figure 8 live video Window

## 6.Convert AV files to MP4

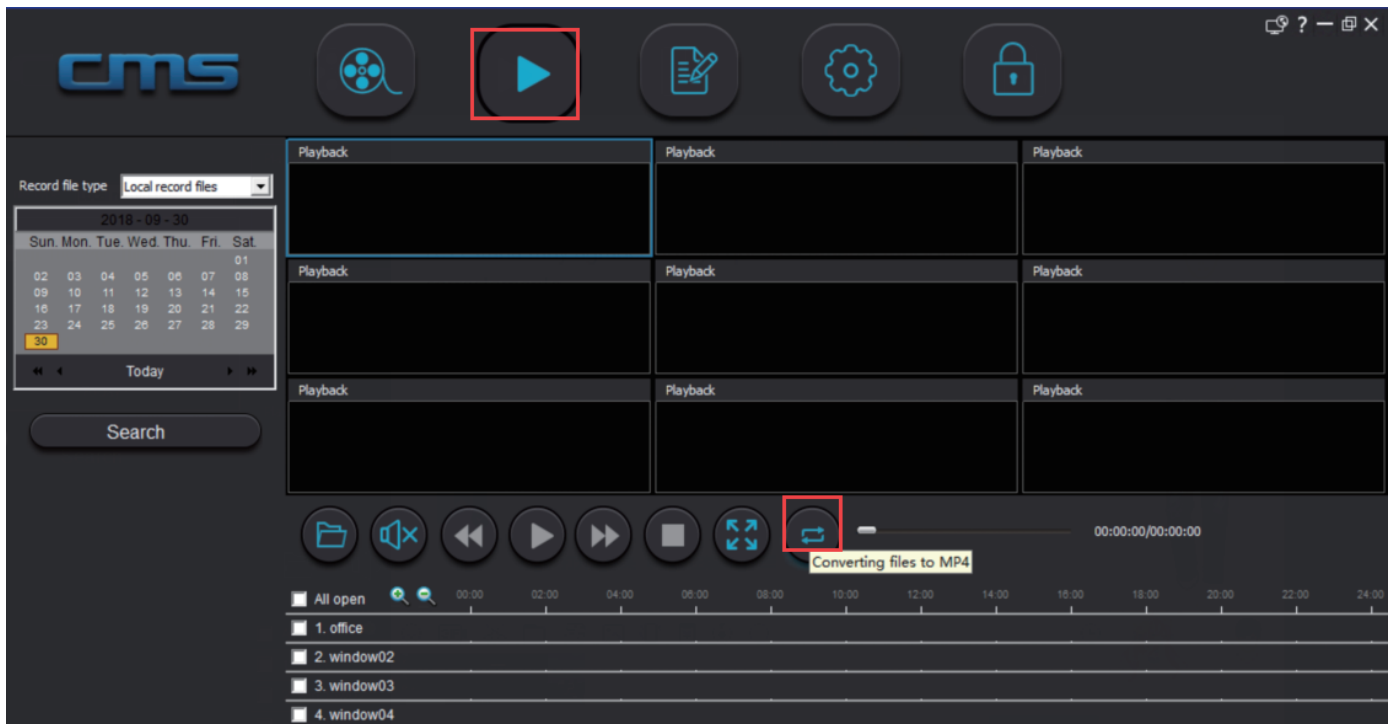


Figure 9